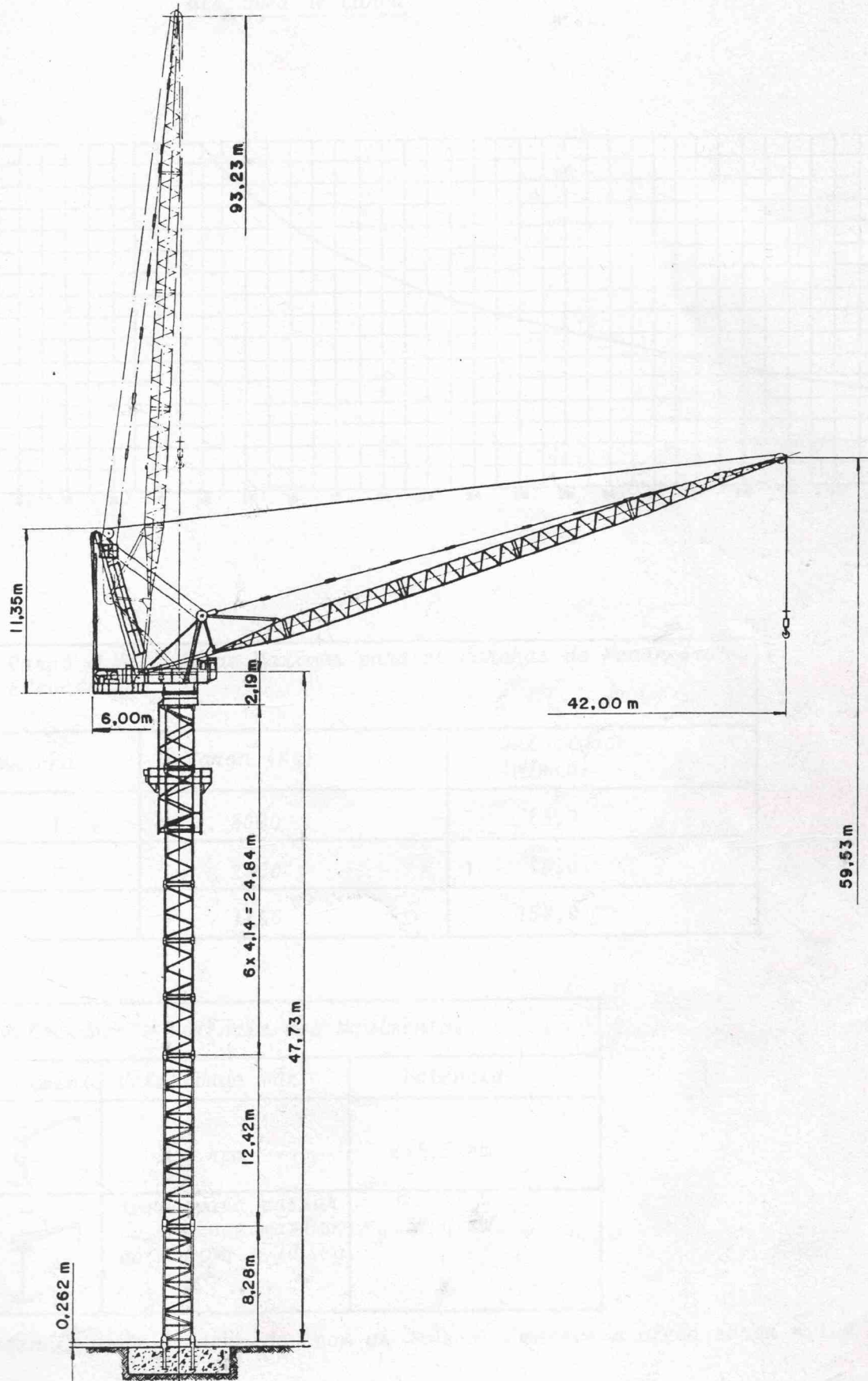


GRUA 90/180 HB - ESTACIONÁRIA



LIEBHERR

Benennung / Description / Descrição

Typ / Model / Tipo  
90/180 HB

MANUAL DE INSTRUÇÕES

Ab / From / A partir de  
111 008 & 009

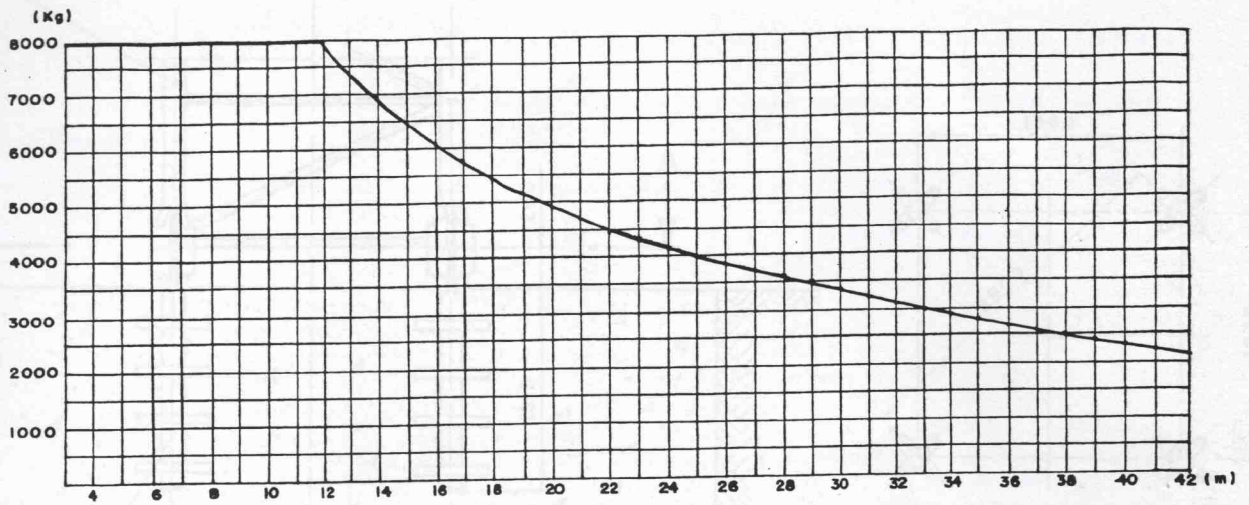
Drawn / Edition / Data

Rev. 15-7ª edição



Blatt / Page / Folha

1

Diagrama de Carga



Carga e Velocidade Maximas para as Marchas do Mecanismo Elevatorio		
Marcha	Carga (Kg)	Velocidade (m/min)
1	8000	23,0
2	2800	80,0
3	1160	158,0

Velocidade e Potencia dos Movimentos		
Movimento	Velocidade max.	Potencia
	1,0 rpm	2x5,5 KW
	tempo para passar do alcance maximo ao minimo = 70 seg.	37,0 KW

Potencia max. consumida, com os tres movimentos a plena carga = 109 KW

**LIEBHERR**

Benennung / Description / Descrio

Typ / Model / Tipo

90/180 HB

Ab / From / A partir de

111 008 & 009

Blatt / Page / Folha

2

Datum / Edition / Data

Out/85-1<sup>a</sup> edio

MANUAL DE INSTRUES